



TRELLEBORG

Technical manual

Trelleborg
Wheels



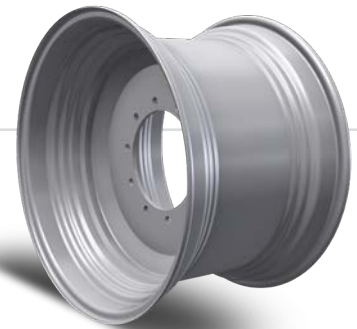
Trelleborg expertise

Trelleborg is a leading supplier of high-quality wheel assemblies for a wide range of Agricultural, Forestry and LAT equipment.

The investments made over the years in production, combine state of the art design with world class manufacturing technology. The result is high quality wheels to make your working operations more efficient and productive.

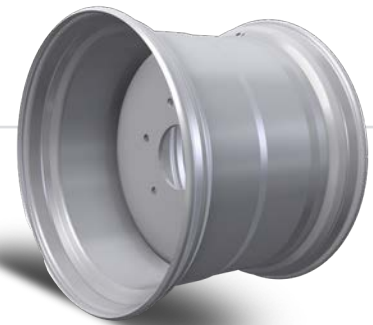
Agricultural wheels

Roll formed symmetric and asymmetric wheels, with a 5 degree tapered bead seat. Available as fixed or adjustable configuration in W-DW-TW (patented design)-MW profile. Range from 24 inches to 54 inches, also for dual mounting solutions



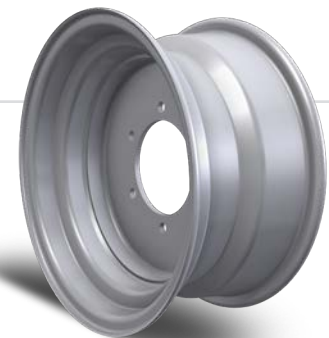
Flotation wheels

Roll formed asymmetric wheels with a 15 degree tapered bead seat. Range from 22.5 inches to 30.5 inches, for agricultural trailers, tankers and forestry equipment. Also available with special reinforcements and valve protectors.



Implement wheels

Roll formed asymmetric wheels with a 5 or 15 degree tapered bead seat. Range from 12 inches to 20 inches, for plows, seeders and other agricultural equipment. Available with reinforcements and valve protectors.



LAT wheels

Roll formed or pressed wheels, mainly symmetric, for small agricultural or industrial equipment with a 5 degree tapered bead seat.

Bolted and welded configuration, also available with special features such as hub, axle and bearing.



Printed on
recycled paper

Dual mounting systems

They are used when there is the need of increasing the torque on the ground and reducing the soil compaction.

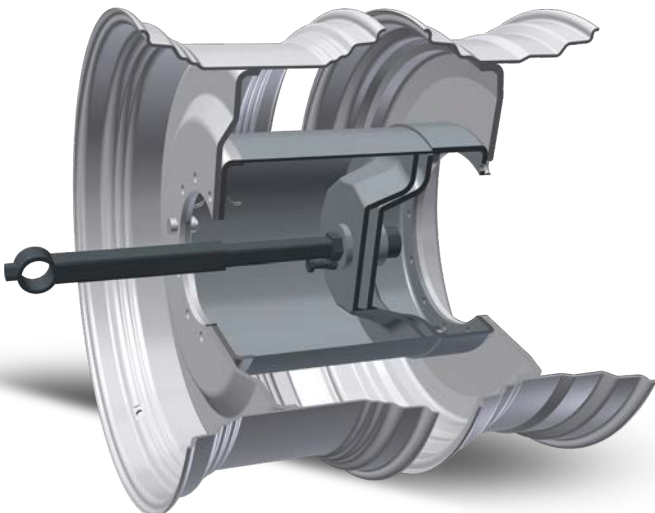
Trelleborg offers two solutions for agricultural dual wheels: the DU0500 and the Twinning.

DU0500

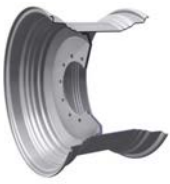


- External bare rim and a central drum mounted on the original tractor wheel with a system of bars and clamps
- Customized solution for central drum, number of clamps and bar length
- Easy to adapt to different tractors up to 500 hp

TWINNING

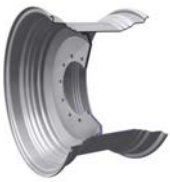


- Systems directly mounted on the machine hub (no additional stresses on the tractor wheel)
- Customized distance between wheels
- Easy to adapt to tractor up to 400HP



Agricultural wheels

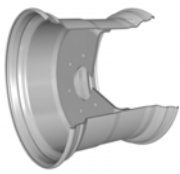
DIAMETER [INCHES]	RIM SIZE	DISC THICKNESS [MM]	RIM WELL INTERNAL DIAMETER [MM]	MIN OFFSET [MM]	MAX OFFSET [MM]	ADJUSTABLE DESIGN
24	W10LX24	10	560,9	-108	+95	
	W12X24	10	560,9	-97	+85	
	TW14LX24	10/12	511,0	-109	+99	
	TW16LX24	10/12	511,0	-137	+125	
26	DW20BX26	15	564,0	-166	+146	
	DW25BX26	15	564,0	-227	+217	
28	W12X28	10/13	663,0	-158	+143	
	W14LX28	10/13	663,0	-175	+162	√
	TW14LX28	10/13	613,0	-136	+123	
	TW15LX28	10/13	613,0	-122	+109	
	W16LX28	10/13	663,0	-190	+177	√
	TW16LX28	10/13	613,0	-134	+121	
	TW18LX28	10/13	613,0	-160	+147	
	TW20BX28	10/13	613,0	-158	+148	
30	TW13LX30	10/13	662,5	-109	+96	√
	TW16LX30	10/13	662,5	-147	+134	√
	TW18LX30	10/13	662,5	-173	+160	√
	TW20BX30	10/13	662,5	-172	+159	√
	TW23BX30	10/13	662,5	-210	+197	√
32	DW21BX32	18	712,0	-185	+170	
	DW27BX32	18	712,0	-269	+254	
34	DW10LX34	11/15	764,0	-89	+74	
	TW13LX34	11/15	764,0	-118	+102	
	TW15LX34	11/15	764,0	-143	+128	
	TW18LX34	11/15	764,0	-147	+142	
	DW20BX34	11/15	764,0	-170	+155	
	DW23BX34	11/15	764,0	-236	+221	
	DW25BX34	11/15	764,0	-250	+235	



Agricultural wheels

DIAMETER [INCHES]	RIM SIZE	DISC THICKNESS [MM]	RIM WELL INTERNAL DIAMETER [MM]	MIN OFFSET [MM]	MAX OFFSET [MM]	ADJUSTABLE DESIGN
38	DW10LX38	12/15/18	865,7	-90	+75	
	DW12LX38	12/15/18	865,7	-110	+95	
	TW15LX38	12/15/18	865,7	-150	+135	
	TW18LX38	12/15/18	865,7	-188	+173	
	TW20BX38	12/15/18	865,7	-188	+173	
	MW20BX38	15	916,5	-265	+250	
	TW23BX38	12/15/18	865,7	-226	+211	
	MW23BX38	15	916,5	-305	+290	
	TW25BX38	12/15/18	865,7	-252	+237	
	TW27BX38	12/15/18	865,7	-277	+262	
	DW30BX38	15/18	865,7	-224	+312	
42	TW16LX42	13/15/18	967,3	-157	+142	√
	TW18LX42	13/15/18	967,3	-182	+167	√
	TW20BX42	13/15/18	967,3	-182	+169	√
	TW23BX42	13/15/18	967,3	-222	+207	√
	TW25BX42	13/15/18	967,3	-245	+232	√
	TW28BX42	13/15/18	967,3	-284	+271	√
	TW30BX42	13/15/18	967,3	-310	+297	√
44	DW25BX44	18	1018,0	-210	+193	
46	DW13LX46	15/18	1070,0	-190	+172	√
	W16LX46	15	1119,7	-185	+170	
	DW18LX46	15/18	1070,0	-235	+217	√
	TW21BX46	15/18	1070,0	-270	+252	√
	DW25BX46	15/18	1070,0	-313	+295	√
	TW25BX46	15/18	1070,0	-310	+292	√
	DW30BX46	15/18	1070,0	-380	+362	√
50	W10LX50	15	1221,3	-100	+85	
	DW13X50	15	1170,5	-63	+48	
	TW15LX50	15	1170,5	-99	+84	
	DW16LX50	15	1170,5	-97	+82	
54	W10LX54	15	1322,9	-105	+90	
	W12LX54	15	1322,9	-134	+119	

Bead Seat Angle: all wheels in the table with a 5 degree tapered bead seat
Humps not available for these sizes
Standard/Advanced knurling available. Trelleborg High Knurling upon request



Flotation wheels

DIAMETER [INCHES]	RIM SIZE	DISC THICKNESS [MM]	RIM WELL INTERNAL DIAMETER [MM]	MIN OFFSET [mm]	MAX OFFSET [MM]
22.5	AG11.75X22.5	10/12	480,0	-80	+70.5
	AG16.00X22.5	10/12	480,0	-174	+157
	AG20.00X22.5	10/12	480,0	-177	+165
	AG24.00X22.5	10/12	480,0	-212	+200
26.5	AG20.00X26.5	12/15	583,0	-167	+152
	AG24.00X26.5	12/15	583,0	-202	+187
	AG28.00X26.5	12/15	583,0	-211	+196
28.5	AG26.00X28.5	15	614,0	-192	+177
30.5	AG20.00X30.5	15	666,0	-183	+168
	AG24.00X30.5	15	666,0	-220	+205
	AG28.00X30.5	15	666,0	-220	+205

Bead Seat Angle: all wheels in the table with a 15 degree tapered bead seat

Humps: TH2 and TH2B versions available

Advanced Knurling starting from 26.5"

Reinforce: R1 as standard. R3 upon specific request

Valve Guard: V1 as standard. V3 upon specific request



Implement wheels

DIAMETER [INCHES]	RIM SIZE	DISC THICKNESS [MM]	RIM WELL INTERNAL DIAMETER [MM]	MIN OFFSET [MM]	MAX OFFSET [MM]
12	5JAX12	5/6/8	253,4	-50	+44
	7.00IX12	5/6/8	253,4	-76	+68
	8.50IX12	5/6/8	253,4	-92	+86
	10.50IX12	5/6/8	253,4	-112	+106
15	6.00LBX15	5/6/8/10	317,2	-64	+59
	7JAX15	5/6/8/10	317,2	-78	+72
	8.00LBX15	5/6/8/10	317,2	-90	+85
	10.00LBX15	5/6/8/10	317,2	-114	+108
	13.00LBX15	5/6/8/10	317,2	-152	+146
15.3	9.00X15.3	5/6/8/10	317,2	-101	+93
15.5	8.00X15.5	5/6/8/10	317,2	-83	+74
	13.00X15.5	5/6/8/10	317,2	-145	+135
16	5.5KX16	6/8	343,6	-53	+47
	8.00WX16	6/8	343,6	-83	+75
	11X16	6/8/10	334,6	-112	+104
16.5	8.25X16.5	6/8/10	343,6	-72	+64
	9.75X16.5	6/8/10	343,6	-90	+82
17	13.00X17	6/8/10/12	357,0	-138	+132
	16.00X17	6/8/10/12	357,0	-176	+168
17.5	11.75X17.5	8/10/12	480,0	-80	+70.5
18	5.5KX18	10	389,0	-53	+47
	9X18	10	389,0	-95	+85
	11X18	10	389,0	-120	+110
	13X18	10	389,0	-145	+135
20	W6X20	8/9	449,0	-150	+140
	9X20	10	439,0	-90	+80
	11X20	10	439,0	-120	+110
	13X20	10	439,0	-146	+136

Humps: H2 option available starting from 17"

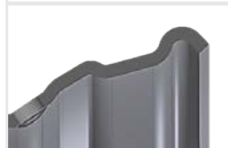
Reinforce: R1 option available

Valve Guard: V8 available for all the sizes

GLOSSARY

Humps: extra bends inside the rim surface, that help driving at low pressure keeping the tyre in place. Trelleborg provides humps for agriculture "H2" and forestry "TH2" or "TH2B".

TH2B



H2

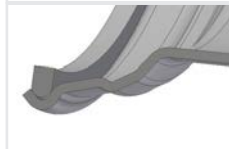


Reinforcements: additional components needed to strengthen the external rim flanges. Three types depending on work conditions:

R1 - Ring



R3 - Bar



Valve Protectors: additional components needed to protect the valve when there is risk of damaging. Three types depending on the application and risk of impact.

V1 type



V3 type



V8 type





LAT wheels

DIAMETER [INCHES]	RIM SIZE	DISC THICKNESS [MM]	WELDED WHEEL	BOLTED WHEEL	WHEEL WITH INTEGRATED HUB	WHEEL WITH CENTER BORE
3	1.50-3	4		•	•	
4	2.10-4	4/5		•	•	
	2.10X4	2/3	•		•	
	2.50C-4	6		•	•	
	2.75AX4	3	•		•	
	6.35-4	5		•	•	
5	3.00AX5	3	•		•	
6	2.50AX6	4	•		•	
	2.50AX6	4	•			•
	2.50A-6	4		•		•
	3.00AX6	3	•		•	
	3.25A-6	6		•		•
	3.50A-6	6	•		•	
	3.50AX6	4	•			•
	4.50A-6	6		•	•	
	4.50AX6	4	•		•	
	4.50AX6	4	•			•
	7.00AX6	4	•		•	
8	2.125-8	4		•		•
	2.125-8	4		•	•	
	2.50AX8	3/4	•		•	
	2.50AX8	4/6	•			•
	2.50C-8	8		•		•
	2.50CX8	4	•			•
	2.50CX8	4	•		•	
	2.50X8	2/3	•		•	
	2.50X8	3	•			•
	3.00D-8	6		•	•	
	3.00D-8	5/6/8/9/10		•		•
	3.00DX8	4/5	•		•	
	3.00DX8	4/5	•			•
	3.75I-8	6/8/9/10		•		•
	4.25I-8	10		•		•
	4.33R-8	8/10/12		•		•
	4.375AX8	4	•		•	
4.375AX8	4	•			•	
5.00X8	4/5	•			•	
5.375-8	4		•	•		
5.375IX8	4/5	•		•		
5.375IX8	4/5	•			•	



LAT wheels

DIAMETER [INCHES]	RIM SIZE	DISC THICKNESS [MM]	WELDED WHEEL	BOLTED WHEEL	WHEEL WITH INTEGRATED HUB	WHEEL WITH CENTER BORE
8	5.50AX8	4/5	•		•	
	5.50AX8	4/5	•			•
	5.50I-8	6		•		•
	5.70AX8	4	•			•
	7.00IX8	4/5	•		•	
	7.00IX8	6	•			•
	8.50IX8	5	•		•	
	8.50IX8	5	•			•
9	4.00E-9	8		•	•	
	4.00E-9	8/9/10/12		•		•
	4.00EX9	5/6/8	•		•	
	4.00EX9	5/6	•			•
	6.00E-9	9		•		•
	3.50-10	5		•		•
	3.50BX10	5/6	•			•
	3.50X10	5	•		•	
10	3.50X10	5/6	•			•
	5.00F-10	9/10/12		•		•
	5.00IX10	7/8	•			•
	5.50F-10	8/10/12		•		•
	6.00F-10	12		•		•
	6.00IX10	5/6	•		•	
	6.00IX10	5/6	•			•
	6.75IX10	6	•			•
	7.00IX10	6/8	•			•
	8.25IX10	7/8	•			•
	8.50IX10	6/8	•			•
	9.00IX10	8	•			•
12	3.00DX12	5	•		•	
	3.00DX12	6	•			•
	3.165-12	12		•		•
	4.00X12	5	•		•	
	4.00X12	5	•			•
	4.25X12	6	•		•	
	4.25X12	6	•			•
	5.00S-12	12		•		•
	7.00I-12	6		•		•
	7.00IX12	6/8	•			•
	7.00IX12	6/8	•		•	
	9.00X12	8	•		•	



LAT wheels

DIAMETER [INCHES]	RIM SIZE	DISC THICKNESS [MM]	WELDED WHEEL	BOLTED WHEEL	WHEEL WITH INTEGRATED HUB	WHEEL WITH CENTER BORE
13	4.50X13	6	•			•
14	5.50KX14	5	•		•	
	5.50KX14	6	•			•
14.5	6.75X14.5	6/8	•		•	
	6.75X14.5	6/8	•			•
	3.00DX15	5	•			•
	3.50DX15	6	•			•
15	4.00EX15	5	•		•	
	4.50EX15	6	•			•
	4.50JX15	6	•		•	
	9.00X15	6	•		•	
16	4.00EX16	6	•			•
	9.00EX16	6	•		•	

Bead Seat Angle: all wheels in the table with a 5 degree tapered bead seat
 Bolted configuration for Industrial and Agricultural application
 Welded configuration only for Agricultural application

GLOSSARY

WELDED WHEELS

Two rim halves, symmetrical or asymmetrical, welded together.



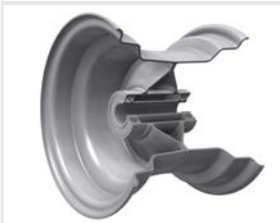
BOLTED WHEELS

Two symmetrical rim halves bolted together.



WHEEL WITH INTEGRATED HUB

drop-centered rim or two half bare rims, welded or bolted together, and a central integrated hub.



WHEEL WITH CENTER BORE

drop-centered rim or two half bare rims, welded or bolted together, and a disc with a central bore.



Wheels technical information




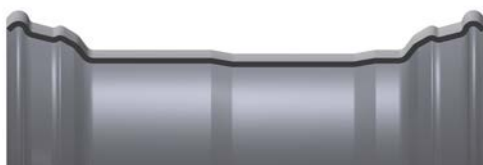




5 degree vs 15 degree tapered bead seat

The bead seat area is the tapered rim surface where the tire beads seat.



Symmetric vs asymmetric rim profile

The rim profile is the interface with the tire and it's standardized by ETRTO (European Tire and Rim Technical Organization).

SYMMETRIC RIM PROFILES	ASYMMETRIC RIM PROFILES
 <p data-bbox="347 1339 523 1361">W RIM PROFILE</p>	 <p data-bbox="1066 1339 1241 1361">DW RIM PROFILE</p>
 <p data-bbox="347 1601 523 1624">TW RIM PROFILE</p>	 <p data-bbox="986 1601 1337 1624">AG DROPCENTRE RIM PROFILE</p>
 <p data-bbox="347 1863 523 1886">BOLTED SPLIT RIM</p>	 <p data-bbox="954 1863 1385 1886">STANDARD DROPCENTRE RIM PROFILE</p>
 <p data-bbox="347 2132 523 2154">WELDED SPLIT RIM</p>	 <p data-bbox="1066 2132 1241 2154">MW RIM PROFILE</p>



Discover our virtual showroom



Discover our website

Follow us



Trelleborg Wheel Systems Italia S.p.A.
Via Nazionale Tiburtina, 143 - 00010 Villa Adriana (RM) Italy
Phone: +39 0774 384701 - Fax: +39 0774 384702
www.trelleborg.com/wheels



Tire iBrochure